



Open Air Collection

Interface®

Smart design. Unlimited opportunities

Open Air is a platform of value driven, hard-working carpet tile styles designed with open spaces in mind. Available in our best-selling neutral colours, Open Air products integrate effortlessly with our system of flooring solutions to elevate any space.

Organic Patterns

Natural forms are irregular and unpredictable, perfect for eliciting a sense of well-being when used in a biophilic design with Open Air 402, 404 and 405.

Geometric Patterns

Using geometric forms, your design takes shape with Open Air 403.

Textured Patterns

A soft, subtle surface texture brings warmth to large, open spaces with Open Air 401.

All patterns in Open Air are carbon neutral throughout its full product life cycle through our Carbon Neutral Floors™ Programme.

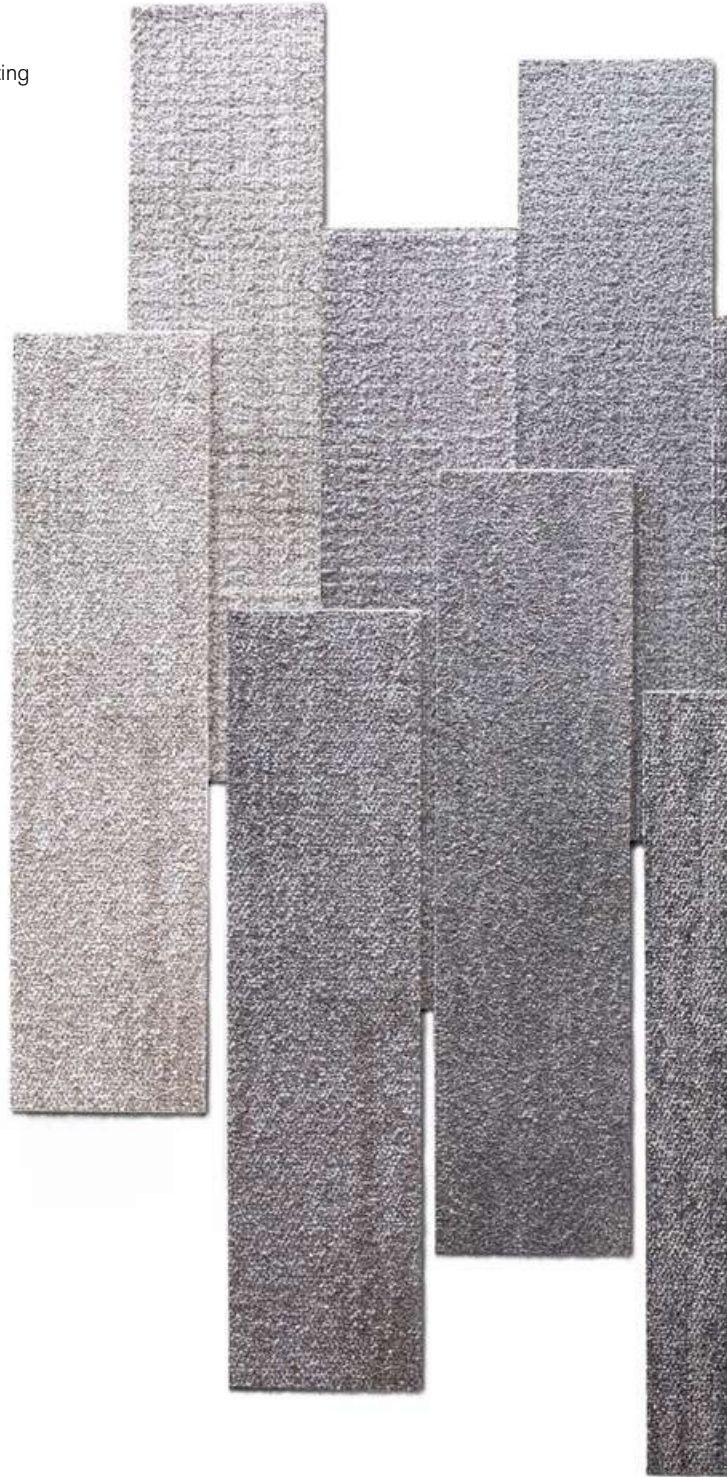


Carpet Tile Open Air 404 Colour Stone Installed Non Directional

Open Air 401 and 402 are our skinny planks in the Open Air collection.

Open Air 401 has a textured pattern. Its soft, subtle surface texture brings warmth to large, open spaces.

Open Air 402 has an organic pattern. Perfect for eliciting a sense of well-being when used in a biophilic design.



Top row: Open Air 401. Bottom row: Open Air 402



Open Air 401 Colourline



9628-001-000 Black



9628-002-000 Iron



9628-003-000 Flannel



9628-004-000 Charcoal



9628-005-000 Natural



9628-006-000 Nickel



9628-007-000 Granite



9628-008-000 Stone



9628-009-000 Linen



Carpet Tile Open Air 401 - Colour Stone - Installed Ashlar
Carpet Tile World Woven WW895 - Colour Loch Weave - Installed Ashlar



Open Air 402 Colourline



9624-001-000 Black



9624-002-000 Iron



9624-003-000 Flannel



9624-004-000 Charcoal



9624-005-000 Natural



9624-006-000 Nickel



9624-007-000 Granite



9624-008-000 Stone



9624-009-000 Linen





Carpet Tile Open Air 401 Colour Charcoal Installed Ashlar
Carpet Tile ChromaDots 1 Colour Dragon Fly Installed Ashlar

Open Air 403, 404 and 405 are our squares in the Open Air collection.

Open Air 403 has a geometric pattern. The geometric shapes add movement to your space.

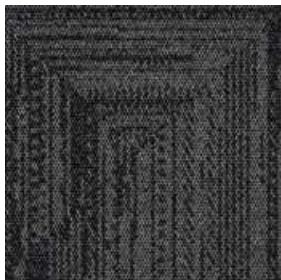
Open Air 404 and 405 have an organic pattern. Perfect for eliciting a sense of well-being when used in a biophilic designed space.





*Top row: Open Air 404. Middle row: Open Air 403.
Bottom row: Open Air 405*

Open Air 403 Colourline



9626-001-000 Black



9626-002-000 Iron



9626-003-000 Flannel



9626-004-000 Charcoal



9626-005-000 Natural



9626-006-000 Nickel



9626-007-000 Granite



9626-008-000 Stone



9626-009-000 Linen

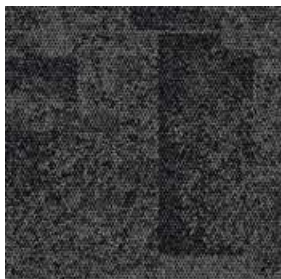


Carpet Tile Open Air 403 Colour Iron, Flannel Installed Non Directional



Carpet Tile Open Air 404 Colour Nickel Installed Non Directional

Open Air 404 Colourline



9625-001-000 Black



9625-002-000 Iron



9625-003-000 Flannel



9625-004-000 Charcoal



9625-005-000 Natural



9625-006-000 Nickel



9625-007-000 Granite



9625-008-000 Stone



9625-009-000 Linen

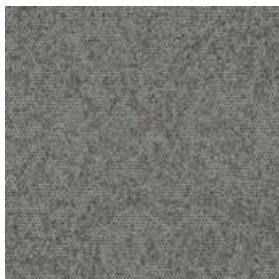
Open Air 405 Colourline



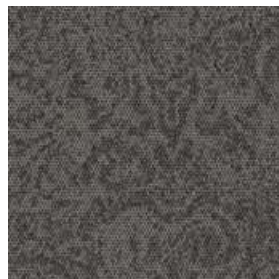
9629-001-000 Black



9629-002-000 Iron



9629-003-000 Flannel



9629-004-000 Charcoal



9629-005-000 Natural



9629-006-000 Nickel



9629-007-000 Granite



9629-008-000 Stone



9629-009-000 Linen



Carpet Tile Open Air 405 Colour Charcoal Installed Non Directional



Carpet Tile Open Air 403 and Open Air 404 . Colour Nickel . Installed Non Directional
Carpet Tile Open Air 401 . Colour Charcoal . Installed Ashlar



Carpet Tile Open Air 405 **Colour** Linen **Installed** Non Directional
LVT Level Set Textured Stones **Colour** Light Concrete **Installed** Non Directional

Specifications

Open Air 401

Style Code	9628
Product Construction	Tufted Textured Loop
Yarn System	100% Recycled Solution Dyed Nylon
Machine Gauge	1/12
Pile Thickness	2.5mm (± 0.5mm)
Total Thickness	6.0mm (± 0.5mm)
Tile Size	25x100cm
Area of Use	Commercial - Heavy Use
Lifetime Antimicrobial	Intersept®
Soil/Stain Protection	Protekt®
Installation Methods	Ashlar, Herringbone



Open Air 402

Style Code	9624
Product Construction	Tufted Textured Loop
Yarn System	100% Recycled Solution Dyed Nylon
Machine Gauge	1/12
Pile Thickness	2.5mm (± 0.5mm)
Total Thickness	6.0mm (± 0.5mm)
Tile Size	25x100cm
Area of Use	Commercial - Heavy Use
Lifetime Antimicrobial	Intersept®
Soil/Stain Protection	Protekt®
Installation Methods	Ashlar, Herringbone



Open Air 403

Style Code	9626
Product Construction	Tufted Textured Loop
Yarn System	100% Recycled Solution Dyed Nylon
Machine Gauge	1/12
Pile Thickness	2.5mm (± 0.5mm)
Total Thickness	6.0mm (± 0.5mm)
Tile Size	50x50cm
Area of Use	Commercial - Heavy Use
Lifetime Antimicrobial	Intersept®
Soil/Stain Protection	Protekt®
Installation Methods	Non Directional



Open Air 404

Style Code	9625
Product Construction	Tufted Textured Loop
Yarn System	100% Recycled Solution Dyed Nylon
Machine Gauge	1/12
Pile Thickness	2.5mm (± 0.5mm)
Total Thickness	6.0mm (± 0.5mm)
Tile Size	50x50cm
Area of Use	Commercial - Heavy Use
Lifetime Antimicrobial	Intersept®
Soil/Stain Protection	Protekt®
Installation Methods	Non Directional



Open Air 405

Style Code	9629
Product Construction	Tufted Textured Loop
Yarn System	100% Recycled Solution Dyed Nylon
Machine Gauge	1/12
Pile Thickness	2.5mm (± 0.5mm)
Total Thickness	6.0mm (± 0.5mm)
Tile Size	50x50cm
Area of Use	Commercial - Heavy Use
Lifetime Antimicrobial	Intersept®
Soil/Stain Protection	Protekt®
Installation Methods	Non Directional



NON DIRECTIONAL



Carbon Neutral Floors™



All Interface manufacturing facilities in the Asia Pacific region maintain registration to ISO 9001 Quality Management Systems and ISO 14001 Environmental Management Systems.

Production specifications are subject to normal manufacturing tolerances and may be changed without notice. Slight variation in colour among different production lots are normal and should be considered in the overall installation plan. Products covered by manufacturer's written warranty only. All other warranties, including without limitation any implied warranties of merchantability or fitness for particular purpose, are hereby disclaimed. Contact your representative for written warranty information.

www.interface.com

Australia

Interface Australia
local toll free: 1800 804 361

India

Interface India
tel: +91 80 4613 1313

South East Asia

Interface Asia
tel: +65 6478 1510

South Korea

Interface South Korea
tel: +82 2 555 1734

Japan

Interface Japan
tel: +81 3 5733 5211

Beijing

Interface China
tel: +86 10 6590 7810

Hong Kong

Interface China
tel: +852 2802 0838

Shanghai

Interface China
tel: +86 21 6340 3868

